



**V-TORK®**  
WORLD CLASS INDUSTRIAL VALVES



## BUTTERFLY VALVES

**V-TORK CONTROLS®**

📍 187/2A SNMV College Road, Malumichampatti  
Coimbatore - 641 050, Tamilnadu, India

✉ sales@vtorkcontrols.com  
vtorkcontrols@gmail.com

☎ +91 7598718922



ISO 9001:2015  
**TUV NORD**  
Cert. No : 44.100.104385



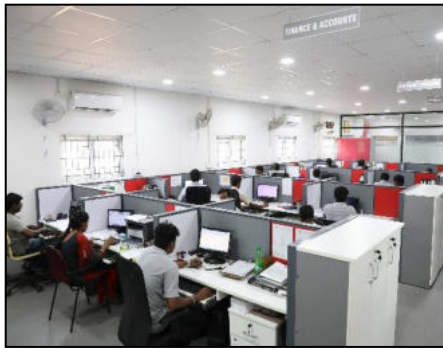
[www.vtorkcontrols.com](http://www.vtorkcontrols.com)



**ABOUT US**



**V-TORK** is a professionally managed company which involves in design & manufacturing of Butterfly Valves, Knife Gate Valves, Ball Valves, Gate Valves, Globe Valves, Check Valves Penstocks, Sluice gates and other Customized Valves for the valuable clients in Water, Power, Paper, Steel, Sugar, Cement, Chemical, Mining, Oil & Gas industries & OEMs. V-TORK was established in 2008 in Coimbatore, the engineering hub of south India. The company is well equipped with the state of art infrastructure for design & manufacturing. V-TORK is a team of young enthusiastic engineers who can always be the solution to the client in all their flow related requirements.



OFFICE



FOUNDRY



ASSEMBLY



HANDLING FACILITIES



BLASTING & PAINTING



TESTING FACILITIES



## C - SERIES BUTTERFLY VALVE

### C SERIES BUTTERFLY VALVE

**V-TORK C SERIES** Concentric Butterfly valves are designed and manufactured to have optimal mix of structural stability. Our Valves are characterized with light weight, compact design and ease of operation and further more they are provided with integrally Moulded and replaceable seals for perfect seating and complete isolation of body material from fluid media. No gaskets are required for these valves as the body liner provides a perfect seal between the valve body and the mating pipe flanges.



Wafer Type Butterfly Valve



Lugged Type Butterfly Valve



Flanged Type Butterfly valve

### STANDARDS

<b>Design &amp; Manufacturing Standard</b>	API 609/MSS SP – 67/BS 5155/ AWWA C 504
<b>Valve Face To Face Dimensions</b>	API 609 CATEGORY
<b>Top Flange Drilling</b>	ISO 5211
<b>Testing Standard</b>	API 598/ISO 5208
<b>Flange Standard</b>	ANSI 150, 300/DIN PN 16,10/BS 10 TAB D & E

### SPECIFICATIONS

<b>End Connection</b>	Wafer, Lug, Double Flanged
<b>Seat Type</b>	Replaceable & Integrally Moulded with body
<b>Pressure rating</b>	PN10 / PN16
<b>Operation</b>	Manual (Lever /Gear Box),Electrical Actuator, Pneumatic Actuator
<b>Body</b>	CI / WCB / SGI /CF8 / CF8M
<b>Disc</b>	CI / WCB / SGI/CF8 / CF8M
<b>Seat</b>	(Moulded/Replaceable) NBR / EPDM /SILICONE / VITON/HYPALON
<b>Shaft</b>	SS410 / SS304 /SS316
<b>Seat Leakage</b>	Tight Shut off
<b>Size Range</b>	40mm – 1200mm



## FEATURES

## C SERIES BUTTERFLY VALVE

### FEATURES OF C SERIES BUTTERFLY VALVE

- Elastomer body liner is extended deep into the top and bottom of disc shaft passages with integral 'O'rings to ensure no working media contacts the body material thus ensures longer life for body.
- Quick 90° on-off operation, minimized operating torque, energy saving.
- Sealing capability well, long service life, with no leakage under pressure test.
- Excellent adaptability for actuated operation through standardized top flange mounting dimensions for actuator fitment.
- Choice of seat and disc materials to suit media conditions and service Requirements.
- Bi-directional valve with tight shut off sealing capability to hold vacuum to rated pressure in either Direction
- Hand lever designed to prevent accidental pinching of hand between the handle and locking lever.
- Resilient seat design eliminates the need for flange gaskets.
- All lug bodies are threaded. Drilled holes are optional.
- A wide selection of materials.
- Applicable for various liquids.



Double Flanged Type/  
Electrical Actuator



Wafer Type /  
Extended Stem Type  
(For Water Application)

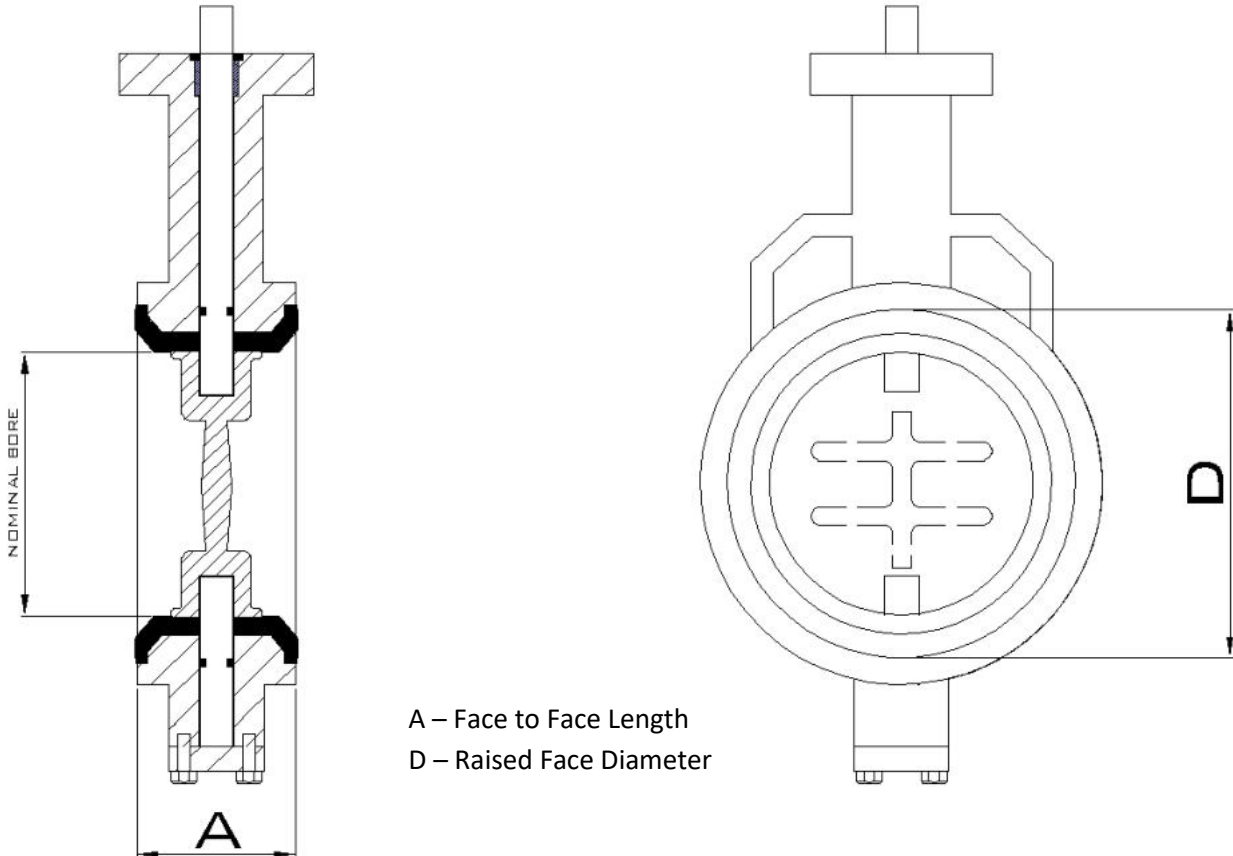
Wafer Type / Pneumatic Actuator  
With Manual Override



## DIMENSION DETAILS

## C SERIES BUTTERFLY VALVE

### DIMENSION DETAILS OF C SERIES BUTTERFLY VALVE



### FACE TO FACE DIMENSION DETAILS FOR C-SERIES BUTTERFLY VALVE

VALVE SIZE (INCH)	CLASS 150	CLASS 300	CLASS 600	RAISED FACE SIZE
	A (MM)	A (MM)	A (MM)	D (MM)
3	48	48	54	127
4	54	54	64	157.2
6	57	59	78	215.9
8	64	73	102	269.9
10	71	83	117	323.8
12	81	92	140	381
14	92	117	155	421.8
16	102	113	178	469.9
18	114	149	200	533.4
20	127	159	216	584.2
24	154	181	232	692.2





## 2X - SERIES BUTTERFLY VALVE

### 2X SERIES BUTTERFLY VALVE

**V-TORK 2X SERIES** Valves are designed in accordance with the international standard. Our Double Eccentric Butterfly Valve reduce friction and wear, provides reliability & endurance. Double eccentric butterfly valves are available in resilient seated as well as metal seated with different material combinations.



Wafer Type Butterfly Valve



Lugged Type Butterfly Valve



Flanged Type Butterfly Valve

#### STANDARDS

<b>Design &amp; Manufacturing Standard</b>	API 609/BS 5155/ AWWA C 504
<b>Valve Face To Face Dimensions</b>	BS 5155/ISO 5752
<b>Top Flange Drilling</b>	ISO 5211
<b>Testing Standard</b>	API 598/ISO 5208
<b>Flange Standard</b>	ASME B16.5 & ASME B16.47

#### SPECIFICATIONS

<b>End Connection</b>	Wafer, Lug, Double Flanged
<b>Types</b>	Long Body Type/Short Body Type
<b>Seat Type</b>	Metal Seal / Laminated Seat
<b>Pressure rating</b>	Class #150/ #300/ #600
<b>Operation</b>	Manual (Lever /Gear Box),Electrical Actuator, Pneumatic Actuator
<b>Body</b>	CI / WCB / SGI /CF8 / CF8M
<b>Disc</b>	CI / WCB / SGI/CF8 / CF8M
<b>Seat</b>	Metal Seat / Laminated seat with Graphite
<b>Shaft</b>	SS410 / SS304 /SS316
<b>Seat Leakage</b>	Tight Shut off
<b>Size Range</b>	40mm – 12000mm

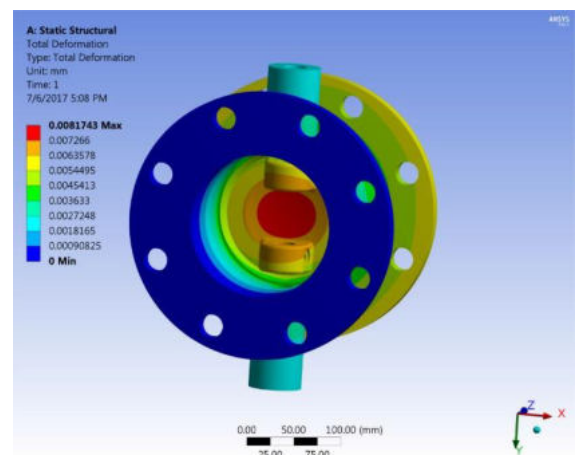
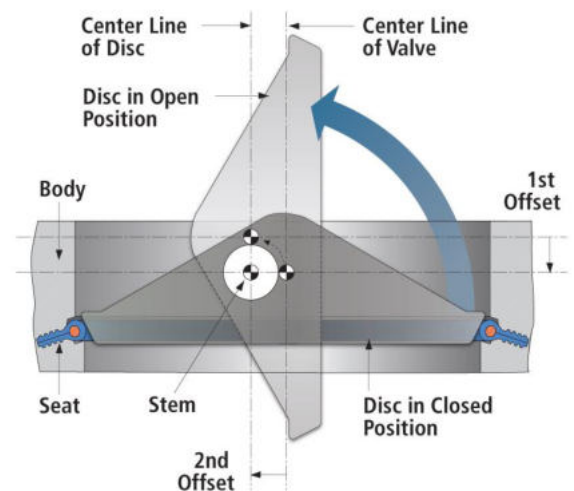


## FEATURES

## 2X SERIES BUTTERFLY VALVE

### FEATURES OF 2X SERIES BUTTERFLY VALVE

- The Butterfly Valve is small and light, and easy to operate.
- The Valve is in full and half axle structure, the disc is in streamline and truss structure, which make the valve high intensity, large flow area and small resistance.
- The alloy steel for sealing face has the flowing advantages: Corrosion-resistance, high temperature resistance, rubbing crocking and long life
- With Two-way sealing, the valve can be installed in any direction without the restriction of medium's flow way.
- The flexible part of flexible butterfly valve can be flexing free or fixed according to working condition.
- Short structure size, small volume, light weight, convenience for operation.
- Adopting semi-axle structure, high strong disc board, big flow area, small resistance and little consumption for energy.
- Adopting the double-eccentric sealing structure, so the more closed and the more tight, the sealing performance is very reliable, after opening ensure sealing surface against contact, keep sealing surface from damaging.
- The valve sealing surface is made of the stainless acid-proof steel, which has the characteristics of corrosive proof, high temperature resistance and long life.
- With bi-direction sealing function, the valve can be installed in any direction, not limited by medium flow direction and by space position.
- As to underground horizontal installing pipe net butterfly valve, it possess the unique bidirectional synchronic display mechanism, user may watch the valve opening or closing status from operation direction
- The extension part of extension type bidirection metal seated butterfly valve can be extended freely and be fixed for limitation according to working condition
- Improved sealing performance, reliability, and lifetime due to its double offset design and sealing element on the disc
- Fabrication expands material and design customization options, reduces weight and cost, and enables shorter lead time

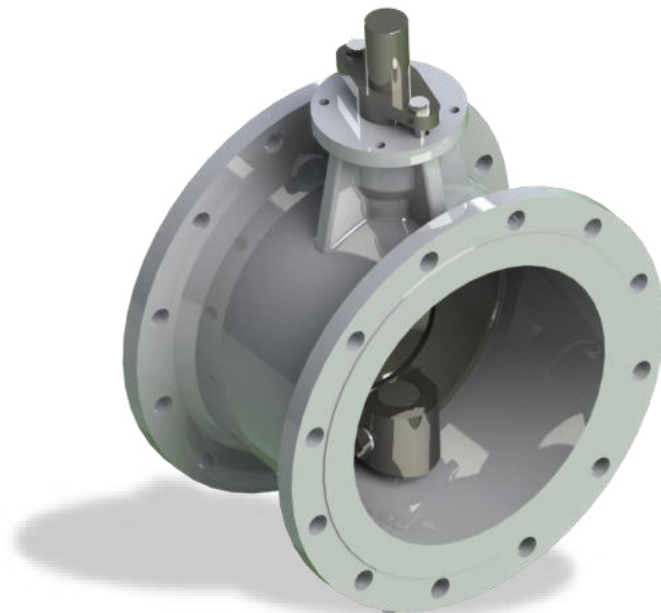




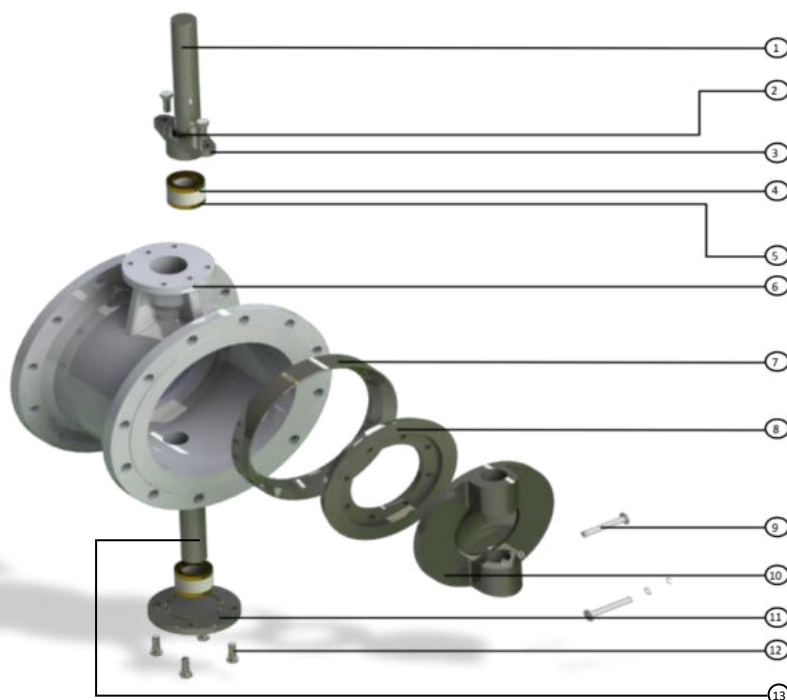
## PARTS

## 2X SERIES BUTTERFLY VALVE

### PARTS OF 2X SERIES BUTTERFLY VALVE



PART NO.	PART NAME
1	Upper Shaft
2	'O' - Rings
3	Gland Flange
4	Thrust Washer
5	Thrust Bush
6	Body
7	Body Seat Ring
8	Disc Seat Ring
9	Disc Hex. Bolt
10	Disc
11	Bottom Cover
12	Fasteners
13	Lower Shaft



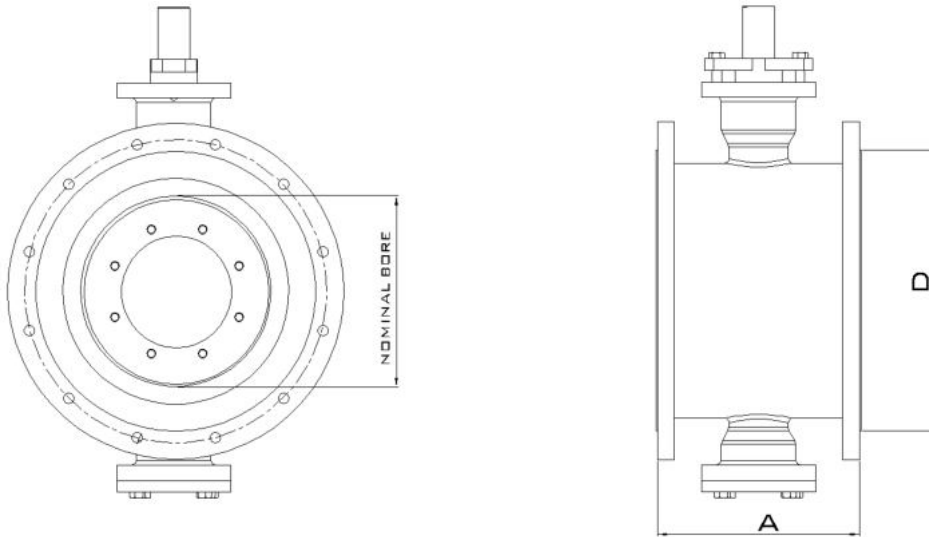




## DIMENSION DETAILS

## 2X SERIES BUTTERFLY VALVE

### DIMENSION DETAILS OF 2X SERIES BUTTERFLY VALVE



A – Face to Face Length  
D – Raised Face Diameter

**FACE TO FACE DIMENSION DETAILS FOR 2X-SERIES BUTTERFLY VALVE (Long Pattern)**

VALVE SIZE (INCH)	CLASS 150	CLASS 300	CLASS 600
	A (MM)	A (MM)	A (MM)
3	203	282	356
4	229	305	432
6	267	403	559
8	292	418	660
10	330	457	787
12	356	502	838
14	381	762	889
16	406	838	991
18	432	914	1092
20	457	991	1194
24	508	1143	1397
26	559	1245	1448
28	610	1346	1549
30	610	1397	1651
32	660	1524	1778
36	711	1727	2083





## DIMENSION DETAILS

## 2X SERIES BUTTERFLY VALVE

### DIMENSION DETAILS OF 2X SERIES BUTTERFLY VALVE

FACE TO FACE DIMENSION DETAILS FOR 2X-SERIES BUTTERFLY VALVE (Short Pattern)			
VALVE SIZE (INCH)	CLASS 150	CLASS 300	CLASS 600
	A (MM)	A (MM)	A (MM)
3	114	180	180
4	127	190	190
6	140	210	210
8	152	230	230
10	165	250	250
12	178	270	270
14	190	290	290
16	216	310	310
18	222	330	330
20	229	350	350
24	267	390	390
26	292	410	-
28	292	430	-
30	318	450	-
32	318	470	-
36	330	510	-
38	410	530	-
40	410	550	-
42	410	570	-
48	470	630	-



A – Face to Face Length

D – Raised Face Diameter

VALVE SIZE (INCH)	RAISED FACE SIZE
	D (MM)
3	127
4	157.2
6	215.9
8	269.9
10	323.8
12	381
14	421.8
16	469.9
18	533.4
20	584.2
24	692.2



## OUR INDUSTRIAL PRESENCE

**V-TORK** is known for its Butterfly Valve & Other Valve Solutions for challenging industrial conditions. For the last 8 years we have been serving our mind & machinery for building world class industrial valves for esteemed customers. The Main Focus is on Power, Mineral & Metallurgy and Paper & Pulp Industry. Also the company have our own benchmarks in various other industrial sectors.

### WATER & SEWERAGE TREATMENT PLANTS



**V-Tork** Water valves are used to control the flow of raw sewage and able to handle the corrosive attack of chemicals. The valve openings are full throat to pass the maximum flow without any hindrance in the flow line. These valves are specially designed to withstand the abrasive attack from the sewage



GE Power & Water



### POWER INDUSTRY



**V-Tork** has proven their power in power industry with their range of valves. We own a wide spectra of Valve solutions for Fossil fuelled Thermal power plants.



### METAL & MINING INDUSTRY



**V-Tork** have special products for mining industry. V-Tork Valves are designed to meet the demanding needs of the metal & mining. Our products are user friendly and 100% parts are interchangeable to minimize the down time.



स्टील अथॉरिटी ऑफ इंडिया लिमिटेड  
STEEL AUTHORITY OF INDIA LIMITED



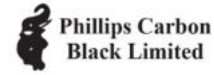
TCE Consulting Engineers Limited  
A TATA Enterprise



## CHEMICAL & FERTILIZERS



V-Tork valves are widely used in many areas of chemical & fertilizer industries. Fully automation valves are used in chemical industries and uses modern synthetic elastomers to ensure media leakages. V-TORK supplies a whole range of products to meet the requirement.



## PAPER & PULP INDUSTRY



Paper & pulp mills have a need for reliable flow control products that could handle thick pulp stock and corrosive liquors with little or no maintenance or downtime. By designing valves with a full-port opening, abrasion-resistant wear surfaces and reliable operating mechanisms.

V-TORK helps to ensure maximum productivity and decrease the downtime of the plant.



## CEMENT INDUSTRY



V-TORK valves addresses the cement industry's toughest abrasive applications and environmental process-management challenges in order to maximize reliability and optimize performance and outputs.



## PUBLIC SECTOR AND OEM's



V-TORK valves have also proven their reliability and quality in Indian Government organizations for critical applications like Cryogenic services etc. V-TORK has been working with world renowned consultancy for various industrial sector.





**V-TORK®**  
WORLD CLASS INDUSTRIAL VALVES

## We Provide Solutions for



*Metal & mining Industry*



*Water & Sewerage Treatment Plants*



*Power Industry*



*Chemical & Fertilizer Industry*



*Cement Industry*



*Paper & Pulp Industry*

## Our Global Presence:



# V-TORK CONTROLS®



@ [sales@vtorkcontrols.com](mailto:sales@vtorkcontrols.com)  
[vtorkcontrols@gmail.com](mailto:vtorkcontrols@gmail.com)

📍 187/2A, SNMV College Road, Malumichampatti,  
Coimbatore – 641050, Tamilnadu, India

☎ +91 7598718922

OUR INTERNATIONAL CLIENT BASE :



🌐 [www.vtorkcontrols.com](http://www.vtorkcontrols.com)