



V-TORK®
WORLD CLASS INDUSTRIAL VALVES

SLUGATE™

SLURRY KNIFE EDGE GATE VALVE

V-TORK® SLUGATE™ B-540

Slurry Knife Edge Gate Valve is designed for harsh environment to handle the abrasive & corrosive slurry media. It features a heavy duty stainless steel gate and removable sleeves on either sides of the gate which provide a full port Bi directional bubble tight seal, trouble free service and high wear resistant guarantee to the valve.

The valve is suitable for wet or dry service since its massive rubber sleeves were designed to seal and withstand the harsh abrasive duty inherent and it can be easily replaceable which makes easy maintenance and cost effectiveness to the end user.



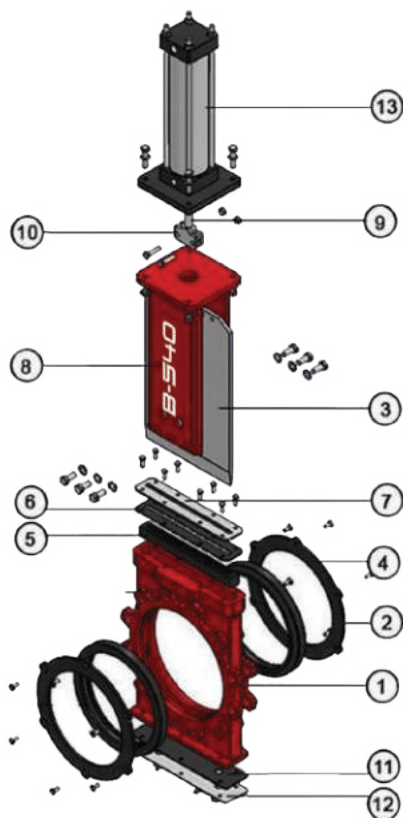
B-540



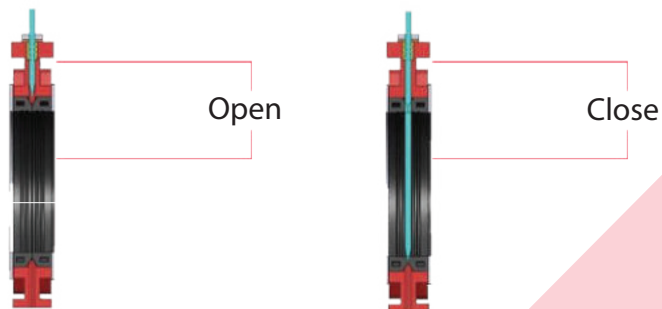
V-TORK®
WORLD CLASS INDUSTRIAL VALVES

SLUGATE™
SLURRY KNIFE EDGE GATE VALVE

B-540



GATE POSITIONS



UNIQUE DESIGN FEATURES



Sleeve Retainer Ring



Open/Close Gate Lock



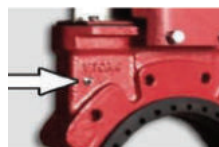
Flushing Ports



Stem Bellow



Elastomer Sleeves



Lubrication Port

PART NAME

MATERIAL OF CONSTRUCTION

| | |
|---------------------------|--|
| Body | Ductile Iron / Cast Iron |
| Elastomer Sleeve | Nitrile Rubber with Reinforced Metal Ring / Other materials are also available |
| Gate | ASTM A240 Gr. SS304 / ASTM A240 G. SS316 / With Hard Chrome Plated |
| Sleeve Retainer Ring | Nitrile Rubber with Reinforced Metal Ring / Other materials are also available |
| Gland Seal | Nitrile Rubber |
| Wiper Seal | Nitrile Rubber |
| Gland Seal Mounting Plate | SS 304 / SS 316 |
| Support Plate | ASTM A36 Gr. Carbon Steel |
| Stem | SS 304 / SS316 |
| Clevis | Carbon Steel |
| Flush Gasket | EPDM / Nitrile Rubber |
| Flush Plate | SS 304 / SS 316 |
| Cylinder | Double acting Pneumatic / Hydraulic |
| Fasteners | Steel / SS 304 / ASTM A193-B8 |

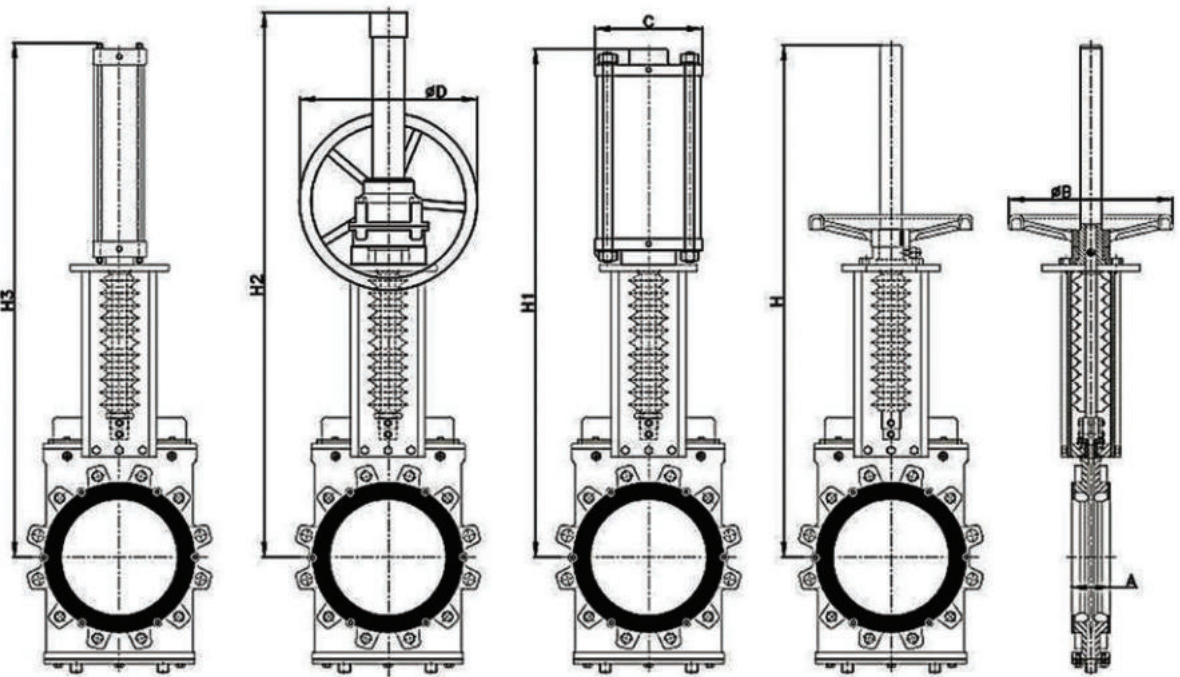
*Special materials on request



SLUGATE™
SLURRY KNIFE EDGE GATE VALVE

B-540

DIMENTIONAL DETAILS



| DN | A | ØB | C | ØD | H | H1 | H2 | H3 |
|-----|-----|-----|-----|-----|------|------|------|------|
| 50 | 51 | 225 | 115 | - | 456 | 476 | - | 570 |
| 80 | 58 | 225 | 140 | - | 575 | 590 | - | 640 |
| 100 | 58 | 350 | 175 | - | 670 | 678 | - | 700 |
| 125 | 67 | 350 | 175 | - | 733 | 736 | - | 810 |
| 150 | 67 | 350 | 175 | - | 789 | 822 | - | 885 |
| 200 | 82 | 410 | 220 | 300 | 971 | 976 | 1000 | 1033 |
| 250 | 82 | 410 | 275 | 300 | 1103 | 1180 | 1510 | 1310 |
| 300 | 86 | 410 | 380 | 450 | 1271 | 1342 | 1600 | 1465 |
| 350 | 86 | 550 | 380 | 450 | 172 | 1488 | 1710 | 1625 |
| 400 | 102 | 600 | 445 | 450 | 1617 | 1667 | 1790 | 1780 |
| 450 | 110 | 800 | 445 | 450 | 1795 | 1840 | 1785 | 1870 |
| 500 | 125 | 800 | 515 | 450 | 1960 | 2027 | 1980 | 2050 |
| 600 | 125 | 800 | 515 | 450 | 2220 | 2296 | 2225 | 2345 |

* Note : Higher sizes on request



V-TORK®
WORLD CLASS INDUSTRIAL VALVES

MODE OF OPERATIONS



Manual Hand Wheel



Manual Chain Wheel



Manual Hand Lever



Manual Bevel Gear



Electrical Actuator



Hydraulic Actuator



Pneumatic Double Action Actuator



Pneumatic Failsafe & Manual Override

SLUGATE™

SLURRY KNIFE EDGE GATE VALVE

SIZE RANGE

2" to 54" (50 mm to 1350 mm)

PRESSURE RATING

150psi CWP (2" to 16"), 90psi CWP (18" to 24")

FLOW DIRECTION

Can be mounted in both pressure directions

OPERATION

Hand Wheel, Bevel gear, Hydraulic Cylinder, Pneumatic Cylinder, Electrical Actuator etc.

ACCESSORIES

Limit Switch, Solenoid Valve, Positioner
Air Filter REGulator etc.

APPLICATIONS

Mining, Minerals (Bauxite Beneficiation Plant, Bauxite slurry, Cement (Slag Granulation), Metals (Beneficiation Plant, Iron ore slurry Suction line & Discharge Lines), Lime Slurry, Flue gas desulfurization, Sand & gravel, Coal, Phosphate, Kaolin, Alumina, Soda Ash etc.)

DISCLAIMER: V-TORK® cannot accept responsibility for possible errors in catalogues, brochures, other printed materials, and website information. V-TORK® reserved right to alter its products without notice including products already on order provided that such alteration can be made without changes being necessary in specifications already agreed. The V-TORK® & V-TORK® Logo types are registered trademarks of V-TORK CONTROLS®. SLUGATE is registered trademark of V-TORK CONTROLS®. All rights reserved.



V-TORK®
WORLD CLASS INDUSTRIAL VALVES

V-TORK CONTROLS
187/2A SNMV College Road, Malumichampatti
Coimbatore - 641 050, Tamilnadu, India
T: +91 7598718922
GST: 33AAHFV1277H124

E-mail - sales@vtorkcontrols.com
vtorkcontrols@gmail.com